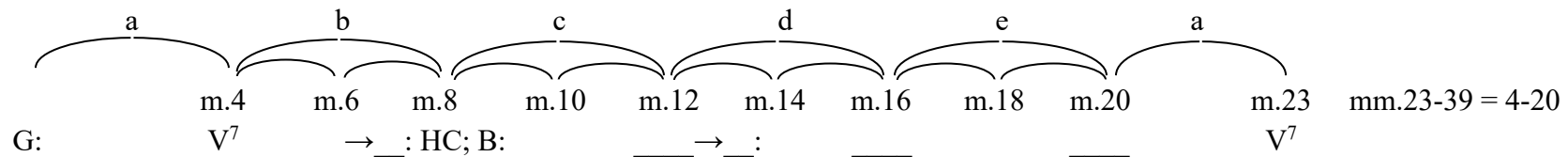


Name: _____

Homework Assignment 1.4: Listen to Fanny Mendelssohn Hensel’s “Mayenlied” with the score while conducting along in 3/4. Use the steady meter and phrase letters to follow along with the diagram below. Then listen again and fill in the blanks below the measure numbers with cadence types or Roman numerals, as appropriate (feel free to pause the recording as often as necessary at phrase endings). Then listen again while following along with the score (see Anthology pp. 279-281) to check your work, and to fill in the remaining blanks indicating key areas. Finally, answer the questions at the bottom of the page.



What three non-chord tones embellish the D7 harmony on beat 1 of m. 4? Give both the note name and the NCT type for each one.

There is an augmented sixth chord on beat 3 of m. 7. Is it Italian, French, or German? _____

Phrase b ends in one key, and phrase c starts immediately in another. What do you call this kind of modulation? _____